

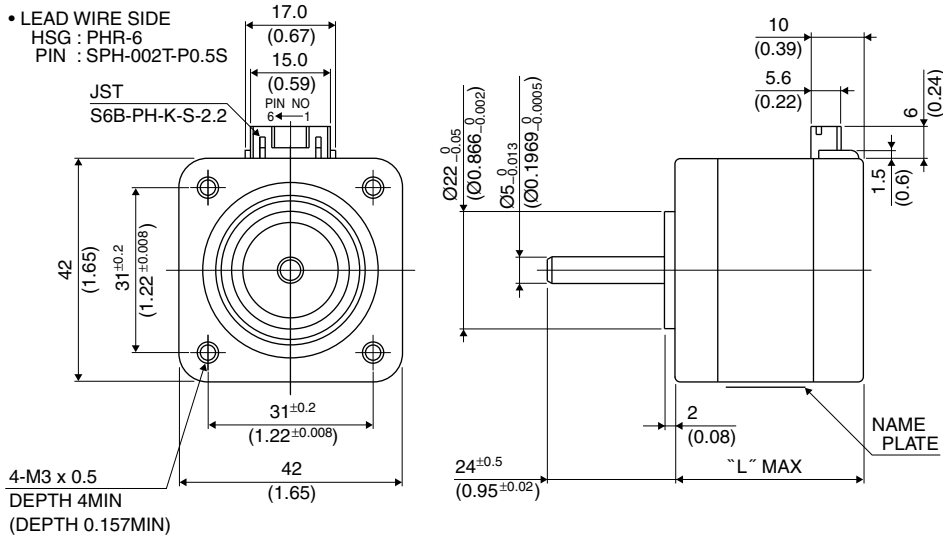
42 □ 1.8°

17PM-F

1.8°

■ Outline

- LEAD WIRE SIDE
HSG : PHR-6
PIN : SPH-002T-P0.5S



Hybrid

UNIT: $\frac{\text{mm}}{\text{(inch)}}$

PIN NO. vs. PHASE

(PHASE)	A	\bar{A}	B	\bar{B}
(PIN NO.)	4	6	3	1

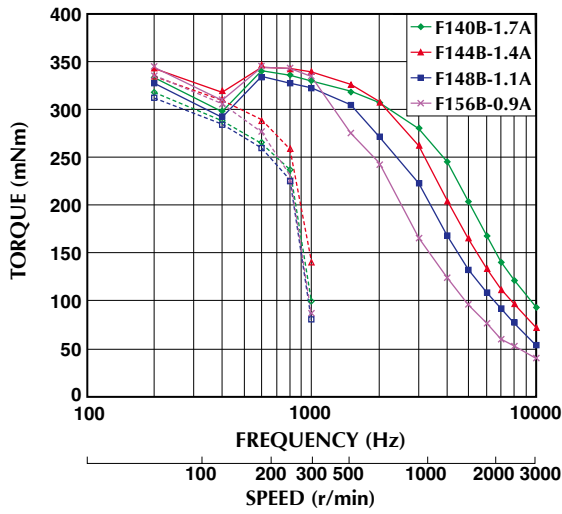
	"L"
17PM-F8**	40 (1.57)
17PM-F1**	42 (1.65)
17PM-F4**	48 (1.89)
17PM-FA**	60 (2.36)

■ Specifications

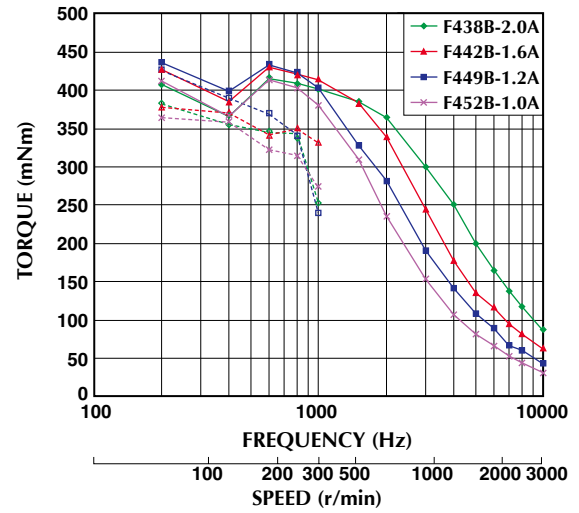
Model	Step Angle (deg)	Drive Sequence	Rated Current (A)	Resistance (Ohms)	Holding Torque (mNm)	Inductance (mH)	Rotor Inertia (g · cm ²)	Detent Torque (mNm)	Mass (g)
17PM-F848B	1.8	BI-POLAR	1.1	2.7	310	4.2	76	14.7	300
17PM-F856B	1.8	BI-POLAR	0.9	4.7	310	6.9	76	14.7	300
17PM-F140B	1.8	BI-POLAR	1.7	1.4	340	2.2	84	18.6	320
17PM-F144B	1.8	BI-POLAR	1.4	2.1	340	3.3	84	18.6	320
17PM-F148B	1.8	BI-POLAR	1.1	3.0	340	4.8	84	18.6	320
17PM-F156B	1.8	BI-POLAR	0.9	5.5	340	8.5	84	18.6	320
17PM-F438B	1.8	BI-POLAR	2.0	1.1	430	2.3	110	23.5	380
17PM-F442B	1.8	BI-POLAR	1.6	1.9	430	3.8	110	23.5	380
17PM-F452B	1.8	BI-POLAR	1.0	5.0	430	9.0	110	23.5	380
17PM-F449B	1.8	BI-POLAR	1.2	3.6	430	6.9	110	23.5	380
17PM-FA38B	1.8	BI-POLAR	2.0	1.8	690	2.8	162	29.4	510
17PM-FA49B	1.8	BI-POLAR	1.3	4.5	690	9.2	162	29.4	510

Torque/Speed Characteristics

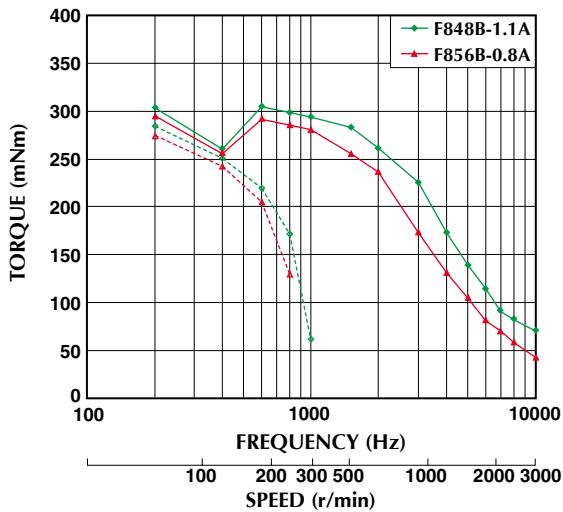
Model No: 17PM-F140B,F144B,F148B,F156B
 Driver: Chopper Dual
 Supply Voltage: 24.0 (Volt)



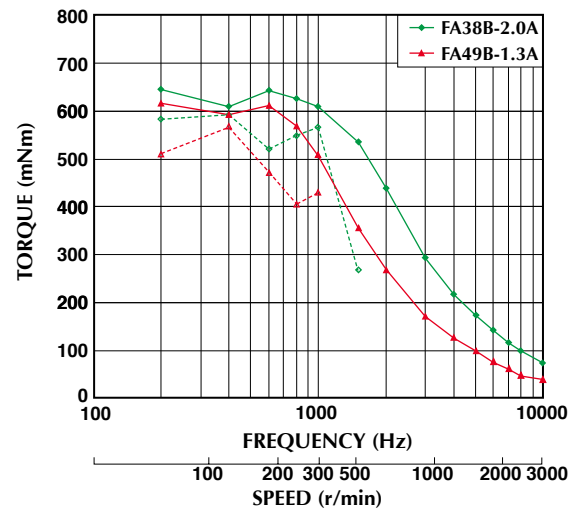
Model No: 17PM-F438B,F442B,F449B,F452B
 Driver: Chopper Dual
 Supply Voltage: 24.0 (Volt)



Model No: 17PM-F848B,F856B
 Driver: Chopper Dual
 Supply Voltage: 24.0 (Volt)



Model No: 17PM-FA38B,FA49B
 Driver: Chopper Dual
 Supply Voltage: 24.0 (Volt)



— : PULL OUT
 - - - : PULL IN

Torque/Speed characteristics are for reference only and it may change when operated at different drive conditions.